



# Modular flow monitoring for field applications.



## On-site control monitor for the flexible connection of flow sensors.

- For the connection of sensors with large immersion depths.
- For sensors made of ceramics, high-grade stainless steel and titanium.
- Teach button allows easy scaling of the measuring range.
- Flow and switch point are indicated by LEDs directly on the unit.
- Robust housing with high protection rating.

Robust metal version

Compact designs

TEACH-IN for simple operation.

Electronic lock

### High flexibility

Standardised M12 connections are used to connect control monitor and sensor as well as the supply. This allows the use of an evaluation and display unit in different applications, e.g. for different immersion depths and a wide range of aggressive liquids.

### Easy handling and high functionality

Adjustment to the flow and setting of the switch points are carried out by pressing a pushbutton. Flow and switch point are indicated by a multicolour LED display. High repeatability of the switch points offers an optimum choice for use.

Electronic locking of the settings and factory reset of the parameters provide additional safety.



Flow monitoring in a return pipe with a large nominal width.

fluid sensors and diagnostic systems

position sensors and object recognition

bus, identification and control systems



**Control monitor for flow sensors of the SF series**

Operating voltage [V]	Current consumption [mA]	Protection	Power-on delay time [s]	Operating temperature [°C]	Switch point adjustment	Material	Order no.
-----------------------	--------------------------	------------	-------------------------	----------------------------	-------------------------	----------	-----------

<b>M12 connector · electrical design DC PNP</b>							
19...36 DC	< 70	IP 67	10	-20...60	via pushbuttons	stainless steel (304S15)	<b>SR5900</b>

**Sensors for connection to control monitor**

Setting range liquid / gaseous [cm/s]	Medium temperature [°C]	Response time [s]	Temperature gradient [K/min]	Pressure resistance [bar]	Sensor length [mm]	Material	Order no.
---------------------------------------	-------------------------	-------------------	------------------------------	---------------------------	--------------------	----------	-----------

**M12 connector · process connection adapter**

3...300 / 200...3000	-25...80	1...10	300	300	44	stainless steel (316S12)	<b>SF5200</b>
3...300 / 200...3000	-25...80	1...10	300	30	55	stainless steel (316S12)	<b>SF5201</b>

**M12 connector · process connection clamp adapter · with flexible immersion depth**


3...300 / 200...3000	-25...80	1...10	30	30	191	stainless steel (316S12)	<b>SF6200</b>
----------------------	----------	--------	----	----	-----	--------------------------	---------------

**M12 connector · process connection G 1/4 male, G 1/2 male, adapter · for aggressive media**

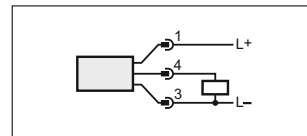
3...60 / -	5...70	2...20	7	30	12	ceramics*	<b>SF2405</b>
3...60 / -	5...70	2...20	7	30	12	ceramics*	<b>SF3405</b>
3...300 / 200...3000	-25...80	1...10	300	300	44	titanium (3.7035)	<b>SF5700</b>

\* aluminium oxide, 99.7 %





**Accessories**

Type	Description	Order no.
	Protective cover, PP colourless	<b>E40203</b>

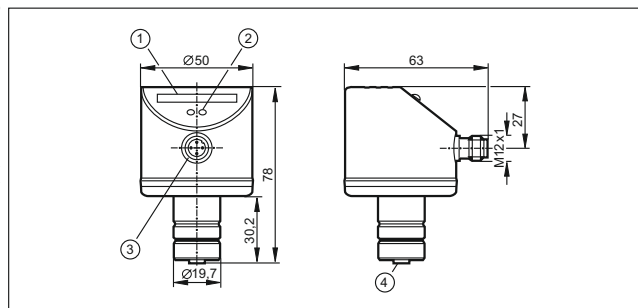
**Wiring diagram**



**Connectors and splitter boxes**

Type	Description	Order no.
	M12 socket, 2 m black, PUR cable	<b>EVC001</b>
	M12 socket, 5 m black, PUR cable	<b>EVC002</b>
	M12 socket, 2 m black, PUR cable	<b>EVC004</b>
	M12 socket, 5 m black, PUR cable	<b>EVC005</b>

**Dimensions**



- 1) LED display
- 2) setting pushbutton
- 3) connection for voltage supply and output signals
- 4) connection for flow sensor

ifm article no. 7511327 · Printed in Germany on non-chlorine paper · We reserve the right to make technical alterations without prior notice · 04.2009